

# Nebraska REAL ESTATE For Sale

## MOOREFIELD PASTURE — Lincoln County NE

**LOCATION:** 5 miles north of Moorfield NE at the end of Fletcher Road

**LEGAL DESCRIPTION:** Section 8—T9N – R27W of the 6th P.M., Lincoln County, Nebraska

**ACRES:** 640+/- Acres      **TAXES:** 2019 taxes paid in 2020 were \$6,685.54.

**LAND USE:** There are approximately 480 acres of fenced pasture with an electric submersible stock well and 1 tank. Also included is about 139 acres of non-irrigated cropland with about 35 acres of off season grass mixed with in the cropland.

**SUMMARY:** The property is being offered with the Seller installing a new fence along the southern boundary of the property as today there is no fence on the southern boundary. The property is crossed by 2 natural gas pipelines from the west to the east about in the middle of the property. The hunting on this property would include elk, mule deer, whitetail deer, upland birds and turkey. If you are not a hunter the hunting right to the property could be leased out for residual income.

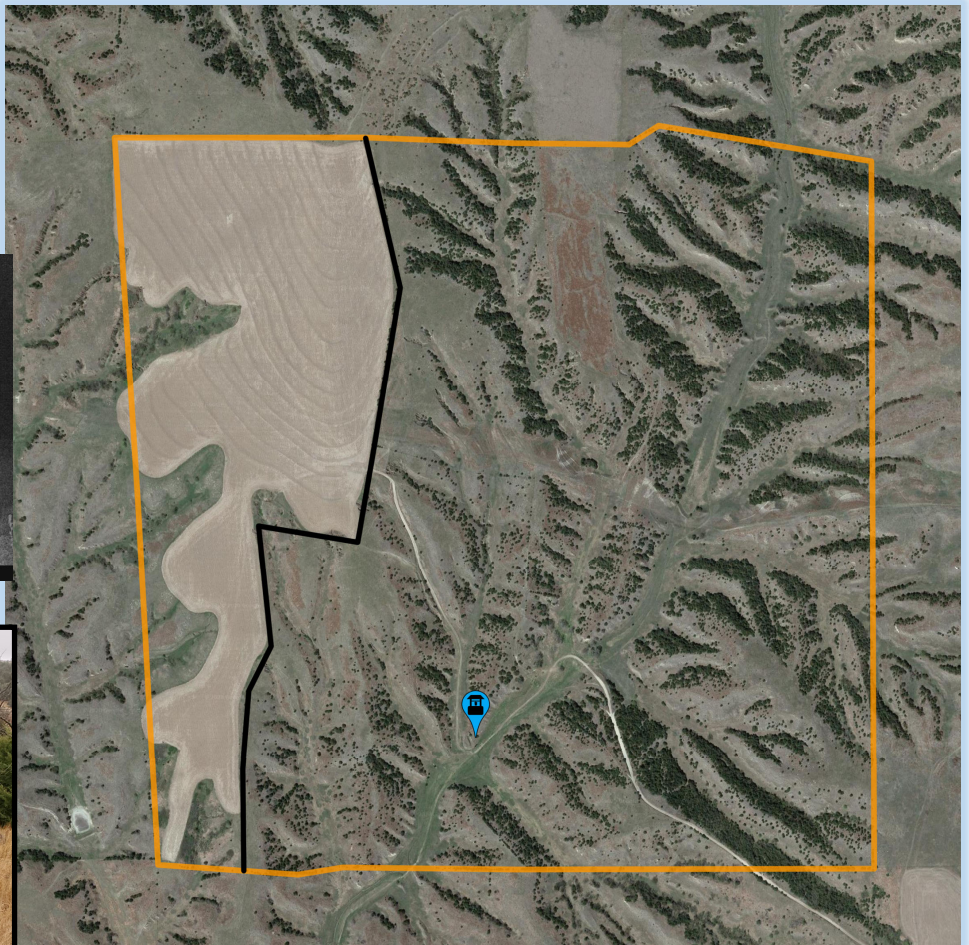
**PRICE: \$690,000.00**

**CONTACT:**

Duane McClain, Listing Broker

Cell: 308.530.0221

duane@nebraskalandbrokers.com



**Nebraska Land Brokers, LLC**

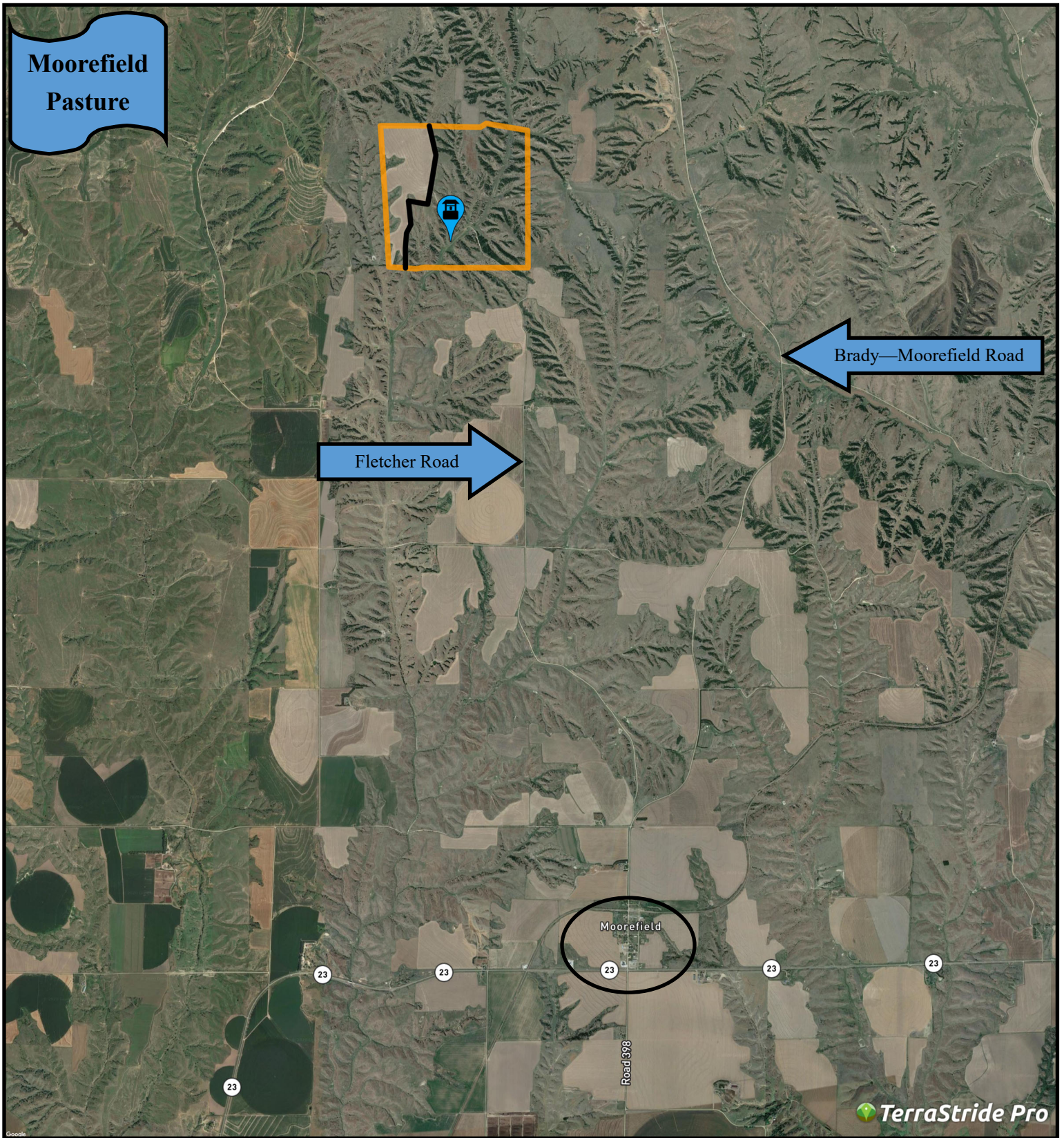
North Platte, NE

308.532.LAND

[www.NebraskaLandBrokers.com](http://www.NebraskaLandBrokers.com)

*All information throughout this brochure is from sources deemed reliable, however the accuracy is not guaranteed. Perspective Buyers should verify all information. All maps presented by Broker are provided for information only and are not intended to be survey accurate.*





**Nebraska Land Brokers, LLC**

North Platte, NE

308.532.LAND

[www.NebraskaLandBrokers.com](http://www.NebraskaLandBrokers.com)

*All information throughout this brochure is from sources deemed reliable, however the accuracy is not guaranteed. Perspective Buyers should verify all information. All maps presented by Broker are provided for information only and are not intended to be survey accurate.*